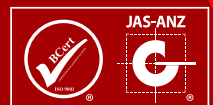




Ezi SOLUTIONS TO TILE FIXING SYSTEM

Ezi SOLUTIONS TO TILE FIXING SYSTEM

— www.ezi-fix.com —



ISO 9001:2015



Ezi MOTARTECH inherited more than 20 years of experiences towards manufacturing, marketing and development of building material industries, especially Technical Mortars. Our business covered the entire Malaysia region and also extended to Asia Pacific Region including New Zealand etc.

VISION

Our commitment is to support the building construction industries to a higher sustainable level of expectation.

MISSION

Our objective is to provide easy solutions to the modern approach of building construction industries and offer strong Technical Advisory Service, to support these industries to a higher level of expectation, and maximise customer satisfaction.



MANUFACTURING

» Ezi MOTARTECH produces reliable, high quality & excellent products through:

- **Strong R&D Resources**

Ezi strongly emphasises on Research and Development and inherited strong R&D resources through collaboration with foreign expert (e.g. BASF Technologies.), to strengthen and enrich its R&D aspiration and develop better products to serve in the regional construction industries.

- **Stringent Quality Control**

Ezi has successfully maintain the quality of every product through Stringent Quality Control System.

- **Precision German Mixing System**

Ezi invest Precision German Mixing System in the Dry-mix production line for higher product quality, consistency and productivity.

- **Proper Plant Building**

Ezi invest a major plant that houses the R&D, Supply Chain, QA/QC, Product Dispatch, Maintenance and Production Department. The production divided to two production lines, which is the Dry-mix line and the Wet-mix line. The plant also consists of 2 large warehouses for the storage of raw material and the finished goods.

- **Compliance to International Standard**

Ezi Product manufactured complying with the latest materials standards.



TECHNICAL ADVISORY CENTRE

» Ezi MOTARTECH offers the following services:

- **Ezi Technical Advisory**

We provide appropriate technical advice to meet any inquiry.

- **Ezi Technical Specification**

We offer adequate and a vast range of different tiling installation system and documentation for the benefits of customers.

- **Ezi Technical Seminar/Training**

We provide various types of technical presentation to enhance related knowledge and resolve any hesitation of customers.

- **Ezi Site Supervision**

We provide on-site supervision and demonstration to fulfill any customer's requirement.

- **Ezi Research on Standard & Certification of Products**

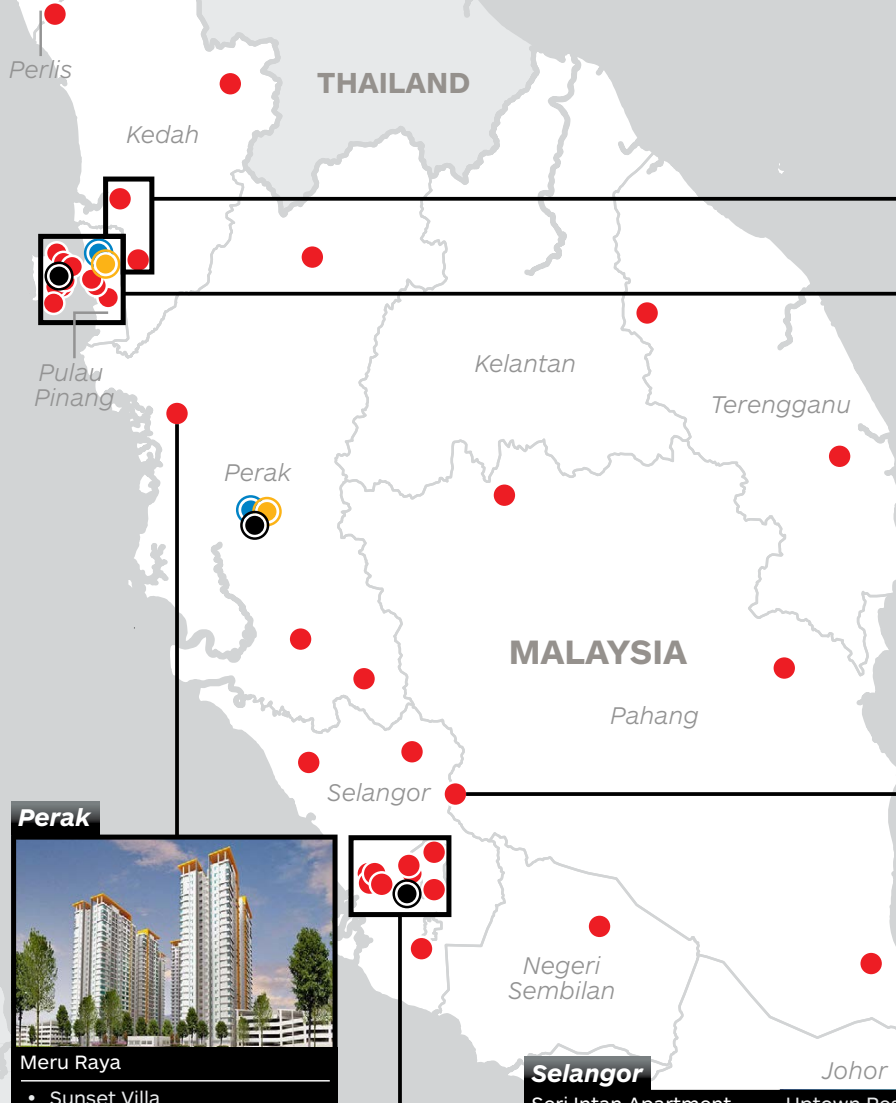
We provide strong R&D facilities in helping customer to verify test results and resolve problems.

- **Ezi Collaborative Customization on Special Requirement**

Where companies work in partnership with individual customers to develop and offer precise product that best-fitted each customers' needs.



PROJECT REFERENCE & DISTRIBUTORS



Kedah



Cinta Sayang Resort Villas

- Taman Saujana Indah

Pahang – Genting Highland



Ion D'Elemen



Midhills

Perak



Meru Raya

- Sunset Villa

Selangor

Seri Intan Apartment



Seri Kasturi Apartment



Lake Park Residence



Uptown Residences



Tamara Residence



PPA1M Selasih



Empire Damansara



- Seri Baiduri Apartment
- Setia Jati Apartment
- Seri Pinang Apartment
- Honda Showroom
- Villa Crystal

- Sales office
- Factory/warehouse
- R&D laboratories
- Project location

* Location markers are for illustrative purposes only.

* Listed projects shown are selective Ezi projects only.

* Our distributors channel including dealers and hardware stores where covered within Malaysia regions (Northern, Central, Southern and East Coast). Our business also extended to New Zealand, Hong Kong and etc.

Auckland



ASB Bank Queen Street



Goodman Building

- Auckland High Court
- Carl's Jr.
- Countdown
- EMA
- Ferrari Showroom
- Henderson Train Station
- KFC Lincoln Road
- Mobil On The Run
- Nike Store
- Pukekohe Cinema Development
- Rub A Dub Car Wash

Penang

The Light Collection 1/ 2/ 3/ 4



Light Point

The Cantonment Condo

Iconic Skies



Permatang Sanctuary



Raffles Residence 1818



Arte S Residence



The Address



D'Pavilion



Setia V-Residence



Raffles Tower



Mira Residence



- Oakridge 3 Storey Semi-D
- BM Utama Terrace House and Semi-D
- Perfect Crystal Condo
- 59 Sixty Restaurant
- Icon City
- B.Braun Medical Industries Sdn. Bhd.
- Wisma Yap Chor Yee
- Skyview Residence
- Olive Tree Residence
- Infinity Condominium
- Adventist Hospital

NEW ZEALAND

HONG KONG

Kuching

Sarawak

INDONESIA

1.0

TILE ADHESIVE

» Standard Cementitious Tile Adhesive (C1)

Ezi STAR FIX



Premium range, fine grade, water resistant cementitious adhesive with slip resistance for installing ceramic tiles, mosaic tiles and natural stones.

优质级别，细幼，水泥胶粘剂，具有抗水与防滑移特质。适用于粘贴瓷砖，天然石材等等。

PRODUCT INFORMATION			
Colour	: Grey	Classification	: C1 T
Packing	: 20, 25kg	Bed thickness	: 3-6mm
Shelf life	: 6 months (Vbag) 12 months (Sbag)		
APPLICATION DATA			
Application area	: Wall/Floor, Interior/Exterior, Dry/Wet	Pot life	: Approximate 3-4 hours
Mixing ratio	: 27-29 pbw. of water for 100 pbw. of powder	Open time	: Approximate 15-20 minutes
Coverage	: Approximate 3kg/m ² at 3mm bed thickness	Setting time	: Approximate 24-48 hours

Ezi MULTI FIX



Superior range, coarse grade, water resistant cementitious adhesive for installing ceramic tiles, mosaic tiles and natural stones.

优越级别，稍粗，水泥胶粘剂，具有抗水的特质。适用于粘贴瓷砖，天然石材等等。

PRODUCT INFORMATION			
Colour	: Grey	Classification	: C1
Packing	: 25kg	Bed thickness	: 3-6mm
Shelf life	: 6 months (Vbag) 12 months (Sbag)		
APPLICATION DATA			
Application area	: Wall/Floor, Interior/Exterior, Dry/Wet	Pot life	: Approximate 3-4 hours
Mixing ratio	: 28-30 pbw. of water for 100 pbw. of powder	Open time	: Approximate 15-20 minutes
Coverage	: Approximate 3kg/m ² at 3mm bed thickness	Setting time	: Approximate 24-48 hours

Ezi GREY FIX



Industrial range, water resistant cementitious adhesive for installing ceramic tiles, mosaic tiles and natural stones.

工业级别水泥胶粘剂，具有抗水的特质。适用于粘贴瓷砖，天然石材等等。

PRODUCT INFORMATION			
Colour	: Grey	Classification	: C1
Packing	: 20, 25kg	Bed thickness	: 3-6mm
Shelf life	: 6 months (Vbag) 12 months (Sbag)		
APPLICATION DATA			
Application area	: Wall/Floor, Interior/Exterior, Dry/Wet	Pot life	: Approximate 3-4 hours
Mixing ratio	: 27-29 pbw. of water for 100 pbw. of powder	Open time	: Approximate 15-20 minutes
Coverage	: Approximate 3kg/m ² at 3mm bed thickness	Setting time	: Approximate 24-48 hours

* Classification of tile adhesive is classified in accordance to ISO 13007-1
C1: Standard cementitious adhesive T: Slip Resistance

Vbag: Valve Bag Sbag: Sewing Bag

» Improved Cementitious Tile Adhesive (C2)

Ezi ULTRA FLEX 3in1



High deformability, single part, latex modified, flexible cementitious adhesive with slip resistance and extended open time for installing porcelain tiles and natural stones. Especially for tile installation at very demanding situations and suitable for large format wall tiles.

高柔性的改良水泥胶粘剂，具有抗滑移及延长操作时间特质。适用于粘贴质砖，天然石材等等；特别适用用在高需求的情况与粘贴大片墙砖。

PRODUCT INFORMATION

Colour	: Grey/White	Classification	: C2 TE S1	Shelf life	: 6 months (Vbag) 12 months (Sbag)
Packing	: 25kg	Bed thickness	: 3-6mm		

APPLICATION DATA

Application area:	Wall/Floor, Interior/Exterior, Dry/Wet	Pot life	: Approximate 3-4 hours
Mixing ratio	: Grey: 25-27 pbw. of water for 100 pbw. of powder White: 27-29 pbw. of water for 100 pbw. of powder	Open time	: Approximate 15-30 minutes
Coverage	: Approximate 3kg/m ² at 3mm bed thickness	Setting time	: Approximate 24-48 hours

Ezi STAR FLEX 2in1



High performance, single part, latex modified, flexible cementitious adhesive with slip resistance and extended open time for installing porcelain tiles, mosaic tiles and natural stones.

高性能的改良水泥胶粘剂，具有防滑移及延长操作时间的特质。适用于粘贴质砖，天然石材等等。

PRODUCT INFORMATION

Colour	: Grey/White	Classification	: C2 TE	Shelf life	: 6 months (Vbag) 12 months (Sbag)
Packing	: 20, 25kg	Bed thickness	: 3-6mm		

APPLICATION DATA

Application area:	Wall/Floor, Interior/Exterior, Dry/Wet	Pot life	: Approximate 3-4 hours
Mixing ratio	: 26-28 pbw. of water for 100 pbw. of powder	Open time	: Approximate 15-30 minutes
Coverage	: Approximate 3kg/m ² at 3mm bed thickness	Setting time	: Approximate 24-48 hours

Ezi BOND FLEX 220



Good performance, single part, latex modified, flexible cementitious adhesive with slip resistance and extended open time for installing porcelain tiles, mosaic tiles and natural stones.

性能佳，改良水泥胶粘剂，具有抗滑移及延长操作时间的特质。适用于粘贴质砖，天然石材等等。

PRODUCT INFORMATION

Colour	: Grey	Classification	: C2 TE	Shelf life	: 6 months (Vbag) 12 months (Sbag)
Packing	: 25kg	Bed thickness	: 3-6mm		

APPLICATION DATA

Application area:	Wall/Floor, Interior/Exterior, Dry/Wet	Pot life	: Approximate 3-4 hours
Mixing ratio	: 25-27 pbw. of water for 100 pbw. of powder	Open time	: Approximate 15-30 minutes
Coverage	: Approximate 3kg/m ² at 3mm bed thickness	Setting time	: Approximate 24-48 hours

* Classification of tile adhesive is classified in accordance to ISO 13007-1

C2: Improved cementitious adhesive

T: Slip resistance

E: Extended open time

Vbag: Valve Bag

Sbag: Sewing Bag

S1=Transverse deformation

TILE ADHESIVE

Ezi BIG FIX 6-15



Ultra-thick bed (6 -15mm), single part, latex modified, flexible cementitious adhesive with high compressive properties and extended open time for installing large format tiles and heavy duty stones at floor areas.

超厚施工厚度 (6 -15mm)的改良水泥胶粘剂，具有高抗压及延长操作时间特质。适用于粘贴大与重的地质砖，天然石材等等。

PRODUCT INFORMATION			
Colour	: Grey	Classification	: C2 E
Packing	: 25kg	Bed thickness	: 6-15mm
Shelf life	: 6 months (Vbag)		
			: 12 months (Sbag)
APPLICATION DATA			
Application area:	Wall/Floor, Interior/Exterior, Dry/Wet	Pot life	: Approximate 3-4 hours
Mixing ratio	: 28-30 pbw. of water for 100 pbw. of powder	Open time	: Approximate 15-30 minutes
Coverage	: Approximate 3kg/m ² at 3mm bed thickness	Setting time	: Approximate 24-48 hours

Ezi QUICK FLEX



Quick setting, single part, latex modified, flexible cementitious adhesive with slip resistance for installing porcelain tiles, mosaic tiles and natural stones.

快速设置的改良水泥胶粘剂，具有防滑移特质。适用于粘贴质砖，天然石材等等。

PRODUCT INFORMATION			
Colour	: Grey	Classification	: C2 FT
Packing	: 25kg	Bed thickness	: 3-6mm
Shelf life	: 6 months (Vbag)		
			: 12 months (Sbag)
APPLICATION DATA			
Application area:	Wall/Floor, Interior/Exterior, Dry/Wet	Pot life	: Approximate 20-30 minutes
Mixing ratio	: 25-27 pbw. of water for 100 pbw. of powder	Open time	: Approximate less than 10 minutes
Coverage	: Approximate 3kg/m ² at 3mm bed thickness	Setting time	: Approximate 2-4hours

» Special Product

Ezi MOSAIC FIX & GROUT



Double functions, single part, latex modified, coloured, flexible cementitious adhesive for tiling and grouting. Especially for mosaic tiles.

双重功能，有色水泥胶粘剂。适用于粘贴瓷砖与填补砖缝；特别是马赛克瓷砖。

PRODUCT INFORMATION			
Colour	: Refer to Ezi MOSAIC FIX & GROUT chart	Classification	: C2 and CG 1
Packing	: 25kg	Bed thickness	: 3-6mm
Shelf life	: 6 months (Vbag)		
			: 12 months (Sbag)
APPLICATION DATA			
Application area:	Wall/floor, Exterior/Interior, Dry/Wet	Pot life	: Approximate 3-4 hours
Mixing ratio	: 25-27 pbw. of water for 100 pbw. of powder	Open time	: Approximate 15-20 minutes
Coverage	: For Tiling : Approximate 3kg/m ² at 3 mm bed thickness For Grouting : Refer to consumption chart in page 14	Setting time	: Approximate 24-48 hours

* Classification of tile adhesive is classified in accordance to ISO 13007-1

Vbag: Valve Bag Sbag: Sewing Bag

C1: Standard cementitious adhesive

C2: Improved cementitious adhesive

T: Slip resistance

E: Extended open time

F: Fast-setting

C2: Improved cementitious adhesive

CG 1: Standard Cementitious Grout

» Benefits of using Tile Adhesive



Tile adhesive is a pre-mixed, and fortified with additive that make tile-fixing easy and efficient.

1. EASY TO USE

- Mixing with water
- Bagging product
 - 1 Convenience for transportation process
 - 2 Low dust
 - 3 Clean working space
- Tile are not needed to be soaked

2. FAST

- Notched trowel
 - 1 Creates grooves on the application to help it adhere better
 - 2 Efficiently to apply adhesive uniformly and evenly
 - 3 Grooves can act as markers, so wayward tiles can be aligned and adjusted

3. WORKING QUALITY

- Solid bed fixing
 - 1 Reduce problems, broken tiles especially on the corner, water seeping and stain or efflorescence
 - 2 Strong bonding strength

4. VARIETY OF WORK

- Applicable to lay tiles, glass mosaic, large size, polished tiles, dry wall system, existing tiles without removing them, external areas, parking area, industrial area, swimming pools



■ TILE ADHESIVE

» Tile Installation Process (By Using Trowelling System)

Step 1 Preparing the Substrate

- Substrate must be dry, flat and free from contamination, e.g. dust, grease, laitance, oil, paint, etc.

NOTE

Dampen the surface with water when it has become heated from exposure to sunlight.



Step 2 Preparing the Mix

- Mix adhesive with water or latex admixture until a smooth, non-slump paste is achieved (in accordance to recommended mixture ratio).
- Allow the paste to rest for approx. 10 minutes, then re-stir before using it.



Step 3 Spreading the Mix

- Spread the paste to the substrate at bed thickness of 3-6mm (may vary depending on tile size and weight)



with appropriate notched trowel. It is also applicable up to 12mm in small isolated areas.

- Spread no more than 1m² at a time to prevent Skin-Over.

NOTE

For tile or stone size greater than 300 x 300 mm or subject to heavy loads, spread the adhesive on the back of the tiles or stones to ensure complete coverage.

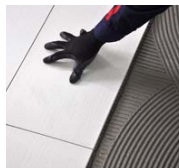


NOTE

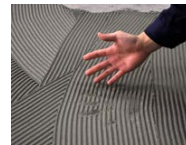
Unfavorable weather conditions (e.g. extremely hot, strong, wind, high temperature, etc.) or highly absorbent substrate can drastically reduce the open time.

Step 4 Installing the Tiles

- Tiles should be fixed dry, they should not be soaked. Recommended to use damp cloth to clean the dusty tile back.
- Tiles should be installed under a firm pressure, and followed by slight twisting action to ensure good coverage and contact of the adhesive (Solid Bed Fixing).
- Tiles must be installed on the fresh



adhesive bed within its recommended open time before Skin-Over of the adhesive occurs. If the adhesive loss of its tackiness, discard and re-apply fresh adhesive bed.



- Allocate tile joints of approx. 3mm wide between tiles.
- Remove surplus adhesive from tile surface and joints before it hardens.
- Tiling installed must be protected from water and rain for at least 24 hours.

Guideline of Tile Adhesive Coverage According to Packing Size (Approximation)

Bed Thickness	Packing Size			
	20kg		25kg	
	m ²	sf.	m ²	sf.
3mm	6.67	74	8.33	90
6mm	3.33	37	4.17	45
9mm	2.22	24	2.77	30
12mm	1.67	18	2.08	22

2.0

LATEX ADMIXTURE



» Latex Admixture for Tile Adhesive

EziMIX STAR AD-1



High performance polymer emulsion admixture which developed to enhance performance of Ezi's range of cementitious tile adhesive.

特制乳液添加剂·用于增强水泥胶粘剂的功能及用途。

PRODUCT INFORMATION			
Colour	: Milky white	Packing	: 4, 25 litres
Shelf life	: 12 months (dry condition)		
APPLICATION DATA			
Mixing ratio	: Refer to the mixing ratio of Ezi's range of tile adhesive		
Coverage	: Approx. 1.2m ² per litre at 3mm bed thickness		
BENEFITS			
<ul style="list-style-type: none">• Enhance adhesion strength/ Increase durability/ Reduce drying shrinkage/ Enhance flexural properties/ Minimise efflorescence/ Enhance resistant to inclement weather			
USAGE			
Recommend to mix Ezi's range of cementitious tile adhesive when fixing porcelain tiles OR fixing at very demanding situations as below:			
<ul style="list-style-type: none">• Wet duty areas/ Water immersion areas/ Swimming pools/ Areas subjected to movement/ Heavy traffic areas/ Dense concrete surfaces/ Existing ceramic tiles and natural stones/ Existing vinyl tiles/ Building boards			

Note: Tiling onto existing vinyl tiles and building boards is recommended to prime surface with EziMIX SBR BOND before tiling.

» Multi-Purpose Latex Admixture

EziMIX SBR BOND



Styrene Butadiene Rubber Polymer Emulsion Admixture which specially formulated for multi-purpose usage of construction applications.

高性能·多功能·乳液添加剂·用于强化水泥胶粘剂的功能及多种建筑用途。

PRODUCT INFORMATION			
Colour	: Milky white	Packing	: 1, 4, 25 litres
Shelf life	: 12 months (dry condition)		
BENEFITS			
• Multi-purpose usage/ High solid content/ Reduce water permeability properties/ Damp proofing or waterproofing coating/ High flexibility/ Enhance bonding properties			
USAGE & APPLICATION DATA			
Neat primer	: Mixing ratio: Direct use from the container Coverage: Approximate 12m ² /litre (1 coat)		
Slurry bond coat (bonding agent)	: Mixing ratio: 1pbw. EziMIX SBR BOND to 1.5pbw. OPC Coverage: Approximate 3m ² /litre (1 coat)		
Admixture for tile adhesive	: Mixing ratio: Refer to the mixing ratio of Ezi's range of tile adhesive Coverage: Approximate 3kg/m ² at 3mm bed thickness		
Admixture for cement-sand (render/screed)	: Mixing ratio: 10-15 litres EziMIX SBR BOND to 50kg OPC, 150-200kg sand Coverage: Approximate 0.8m ² /litre at 12mm thick		
Admixture for plaster	: Mixing ratio: 1-2 litre EziMIX SBR BOND to 25kg Ezi PLASTER Coverage: Approximate 5m ² /litre (at 1-2mm thick)		
Damp proofing or waterproofing coating	: Mixing ratio: 1pbw. EziMIX SBR BOND to 1.5pbw. OPC Coverage: Approximate 1.5m ² /litre (2 coats)		

■ LATEX ADMIXTURE

EziMIX MULTI-PLUS



Industrial range Polymer Emulsion Admixture which provide multi-purpose usage for construction applications.

多功能乳液添加剂，用于多种建筑用途。

PRODUCT INFORMATION			
Colour	: Milky white	Packing	: 4, 25 litres
		Shelf life	: 12 months (dry condition)
BENEFITS			
<ul style="list-style-type: none"> Multi-purpose usage/ Enhance bonding properties/ Enhance cohesion properties/ Increase durability/ Minimise efflorescence/ Reduce drying shrinkage/ Increase compressive properties 			
USAGE & APPLICATION DATA			
Admixture for Ezi tile adhesive	Mixing ratio: Refer to the mixing ratio of Ezi's range of tile adhesive Coverage: Approximate 3kg/m ² at 3mm bed thickness		
Admixture for Ezi tile grout	Mixing ratio: 40 pbw. of water for 100 pbw. of Ezi GROUT FINE/ 33-38 pbw. of water for 100 pbw. of Ezi GROUT COARSE Coverage: Refer to Ezi GROUT consumption chart in page 14		
Admixture for cement-sand (render/screed)	Mixing ratio: 10-15 litres EziMIX MULTI-PLUS to 50kg OPC, 150-200kg sand Coverage: Approximate 0.8m ² /litre at 12mm thick		
Neat primer	Mixing ratio: Direct use from the container Coverage: Approximate 12m ² /litre (1 coat)		

EziMIX CT BOND



Multipurpose usage latex admixture for use with cementitious tile adhesive, grout, cement, cement-sand mortar.

多功能乳液添加剂，用于水泥胶粘剂，水泥填缝剂与水泥砂浆。

PRODUCT INFORMATION			
Colour	: Milky white	Packing	: 4, 20 litres
		Shelf life	: 12 months (dry condition)
BENEFITS			
<ul style="list-style-type: none"> Multi-purpose usage/Improve adhesion strength/Water resistant properties/ Minimizes efflorescence/Reduce drying shrinkage 			
USAGE & APPLICATION DATA			
Admixture for Ezi tile adhesive	Mixing ratio: Refer to the mixing ratio of Ezi's range of tile adhesive Coverage: Approximate 3kg/m ² at 3mm bed thickness		
Admixture for Ezi tile grout	Mixing ratio: 40 pbw of water for 100 pbw. of Ezi GROUT FINE 33-38 pbw. of water for 100 pbw. of Ezi GROUT COARSE		
Admixture for cement-sand mortar	Mixing ratio: 10-15 litres EziMIX CT BOND to 50kg OPC, 150-200kg sand		

» Latex Admixture for Tile Grout

EziMIX GT-1



Polymer emulsion admixture which specially developed to enhance performance of Ezi's range of cementitious grout

特制乳液添加剂，用于增强水泥填缝剂功能及用途。

PRODUCT INFORMATION			
Colour	: Milky white	Packing	: 1, 4, 25 litres
		Shelf life	: 12 months (dry condition)
APPLICATION DATA			
Mixing ratio	: 40 pbw. of water for 100 pbw. of Ezi GROUT FINE 33-38 pbw. of water for 100 pbw. of Ezi GROUT COARSE		
Coverage	: Refer to consumption chart in page 14		
BENEFITS			
<ul style="list-style-type: none">Enhance compressible properties (to allow better tile's compression and retraction)/ Enhance flexural properties/ Reduce drying shrinkage to prevent tile's joint cracking/ Minimise efflorescence/ Enhance durability			

3.0

GROUT

» Tile Grout

Ezi GROUT FINE



Fine grade, high compressible, water resistant, coloured cementitious grout. Suitable for grouting tile joints up to 5mm wide.

细幼·高压压缩·抗水·水泥填缝剂。适用于缝宽达5毫米。

PRODUCT INFORMATION			
Colour	: Refer to Ezi GROUT FINE Chart	Shelf life	: 6 months (Vbag) 12 months (Sbag)
Packing	: 1, 3.5, 20 kg	Classification	: CG 1
APPLICATION DATA			
Application area:	Wall/Floor, Interior/Exterior, Dry/Wet	Pot life	: Approximate 45 minutes
Mixing ratio	: 40 pbw. of water for 100 pbw. of powder	Setting time	: Approximate 24 to 48 hours
Coverage	: Refer to Ezi GROUT FINE consumption chart in page 14		

Ezi GROUT COARSE



Coarse grade, high compressible, water resistant, coloured cementitious grout. Suitable for grouting tile joints up to 15mm wide.

粗状·高压压缩·抗水·水泥填缝剂。适用于缝宽达15毫米。

PRODUCT INFORMATION			
Colour : Refer to Ezi GROUT COARSE Chart		Shelf life : 6 months (Vbag)	12 months (Sbag)
Packing : 1, 3.5, 20 kg			
Classification: CG 1			
APPLICATION DATA			
Application area: Wall/Floor, Interior/Exterior, Dry/Wet		Pot life : Approximate	45 minutes
Mixing ratio : 33-38 pbw. of water for 100 pbw. of powder		Setting time : Approximate	24 to 48 hours
Coverage : Refer to Ezi GROUT COARSE consumption chart in page 14			

Ezi EPOXY GROUT



High performance, two components, water impervious, chemicals and stain resistant, coloured reaction resin grout. Suitable for grouting and pointing joints up to 12mm wide.

高性能环氧填缝剂，具有防水·抗化学腐蚀·防污垢的特质。适用于缝宽达12mm。

PRODUCT INFORMATION			
Colour	: Refer to Ezi EPOXY GROUT Chart	Shelf life	: 12 months in sealed condition
Packing	: 1kg	Classification	: RG
APPLICATION DATA			
Application area:	Wall/Floor, Interior/Exterior, Dry/Wet	Pot life	: Approximate 40 minutes
Mixing ratio	: 3pbw. Filler (Part A) to 1pbw. Liquid (Part B)	Touch dry time	: Approximate 30 minutes
Coverage	: Refer to Ezi GROUT consumption chart in page 14	Setting time	: Approximate 24 hours

* Classification of grout is classified in accordance to ISO 13007-3
CG 1: Standard Cementitious Grout RG: Reaction Resin Grout

Vbag: Valve Bag Sbag: Sewing Bag

» Non-Shrink Grout

Ezi NON-SHRINK GROUT



Shrinkage compensated, self-leveling, premixed cementitious grout. Suitable to use for machine foundations, honeycombs, columns in precast construction, concrete anchors, cavities, gaps, recesses and etc.

收缩补偿，自流平，预拌型水泥灌浆材料。适用于设置基础，预制装配式柱的施工，锚杆在混凝土中的固定，空洞，凹洼处等。

PRODUCT INFORMATION			
Colour	: Grey	Shelf life	: 6 months (Vbag), 12 months (Sbag)
Packing	: 25kg	Thickness	: Approximate 10-100mm
APPLICATION DATA			
Application area	: Wall/Floor, Interior/Exterior, Dry/Wet	Initial setting time	: Approximate 30 minutes
Mixing ratio	: For flowable: 17-19 pbw. of water for 100 pbw. of powder For trowable: 13-15 pbw. of water for 100 pbw. of powder		
Coverage	: For flowable: Approximate 18.3kg/m ² For trowable: Approximate 19.7kg/m ²		

Vbag: Valve Bag Sbag: Sewing Bag

» Grout Installation Process

Step 1 Preparing the Joint

- Allow the adhesive bed to set at least 24 hours before commencing grouting.
- Joints must be dry and free of contaminants (e.g. dust, grease, laitance, oil, paint etc.)

Step 2 Preparing the Mix

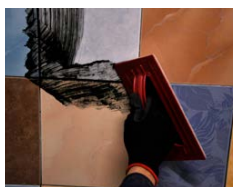
- Mix cementitious grout with latex admixture/ clean water until uniform colour and thin creamy paste is achieved. (in accordance to recommended ratio)



Remarks: Colour pigments in coloured grout may cause stain or discolouration of certain tiles or natural stone slabs, thus always conduct a trial in a small area to determine ease of cleaning and compatibility, before actual application commences.

Step 3 Spreading the Mix

- Apply grout with rubber squeegee or float, working the grout back and forth to ensure that joints are fully filled and compacted.



Step 4 Finishing the Grout

- Clean and remove surplus grout with a clean damp cloth or sponge before it dries out.
- Allow grout to set for 24 to 48 hours before subjected to service condition.



Guideline of Colour Grout Consumption According to Size of Tile and Width of Joints (Approximation)

Size of tile (mm)	Consumption of Colour Grout (kg/m ²) and Width of The Joints (mm)		
	Width of the joint (mm)		
	2	3	5
25 x 25 x 4.0	1.09	1.63	2.72
51 x 51 x 5.0	0.67	1.00	1.67
108 x 108 x 7.5	0.50	0.71	1.18
150 x 150 x 7.5	0.35	0.51	0.85
200 x 200 x 7.5	0.26	0.38	0.64
300 x 300 x 8.0	0.18	0.27	0.45
300 x 600 x 9.0	0.15	0.23	0.38
400 x 400 x 10.0	0.17	0.23	0.43
500 x 500 x 12.0	0.16	0.24	0.41
600 x 600 x 12.0	0.14	0.20	0.34
800 x 800 x 12.0	0.10	0.15	0.26

Note: The consumption of colour grout is calculated based on factor k for cementitious grout = 1.7

Formula for Consumption of Colour Grout Calculation

$$= \frac{(A+B) \times C \times D \times K}{(A \times B)}$$

= kg/m²

A = Length of tile
C = Thickness of tile
B = Width of tile
D = Width of joint
K = Cementitious grout: 1.7
Epoxy grout: 1.4

Note: Tile size might vary from different tile manufacturer

4.0

PLASTER AND MORTAR

Ezi PLASTER FINISH (Skim Coat)



Fine grade, polymer modified, high performance, premixed cement-based skim coat plaster. Suitable to use for wall and ceiling finishes before commencing final finishing materials (paint, coating, wallpaper, etc.).

细幼，高性能，预拌型水泥薄灰泥。适用于墙壁与天花板的装饰涂料。建议在最后的装饰涂料前使用（漆，墙纸，等等）。

PRODUCT INFORMATION			
Colour	: Grey or White	Bed thickness	: Recommended 1-2 mm per layer
Packing	: 25kg	Shelf life	: 6 months (Vbag), 12 months (Sbag)
APPLICATION DATA			
Application area	: Wall, Interior/Exterior, Dry/Wet	Pot life	: Approximate 1-2 hours
Mixing ratio	: 34-36 pbw. of water for 100 pbw. of powder	Final setting time	: Approximate 24-48 hours
Coverage	: Approximate 21m ² per bag at thickness 1mm		

Ezi PLASTER BASE (Base Coat)



Coarse grade, polymer modified, high performance, premixed cement-based skim coat plaster. Suitable to use for leveling, resurfacing, patching and finishing of walls before commencing Ezi PLASTER FINISH and etc.

稍粗，高性能，预拌型水泥薄灰泥。适用于平化，修补与装饰墙面。建议在细幼水泥薄灰泥前使用。

PRODUCT INFORMATION			
Colour	: Grey or White	Bed thickness	: Recommended 2-4 mm per layer
Packing	: 25, 40kg	Shelf life	: 6 months (Vbag), 12 months (Sbag)
APPLICATION DATA			
Application area	: Wall, Interior/Exterior, Dry/Wet	Pot life	: Approximate 1-2 hours
Mixing ratio	: 29-31 pbw. of water for 100 pbw. of powder	Final setting time	: Approximate 24-48 hours
Coverage	: Approximate 10.5m ² per 25kg at thickness 2mm		

Vbag: Valve Bag Sbag: Sewing Bag

» Plaster Installation Process

- Step 1**
- Ensure substrate is dry, flat, free of contaminants and substrate irregularity is less than 4mm under a 3m straightedge.
 - Dampen high water absorption substrate with water.
- Step 2**
- Mix the plaster with recommended mixing ratio until a smooth, consistent and creamy paste is achieved.
- Step 3**
- Spread the plastering mortar onto substrate using plastering trowel, steel float or other similar tools.
Note: No standing time is required.
 - Thickness of the plaster mortar applied at single layer should follow as per recommended. If greater thickness is needed, apply additional layers separately.
Note: Layer underneath must be dry before spreading the subsequent layer.



Plastering Ezi PLASTER BASE onto cement-sand render as base coat



Ezi PLASTER FINISH as finishing coat

■ PLASTER AND MORTAR

Ezi COLOUR HARDENER



Coloured, hard wearing, additive modified mortar. Suitable to use for cast-in-place coloured, textured and imprinted concrete paving and flooring.

有色，耐磨，改良水泥。适用于施颜色，刻纹理与印记在混凝土路面及地坪。

PRODUCT INFORMATION

Colour	: Refer to Ezi COLOUR HARDENER chart	Shelf life	: 6 months (Vbag) 12 months (Sbag)
Packing	: 25kg		

APPLICATION DATA

Application area	: Floor, Interior/Exterior, Dry/Wet	Finished thickness	: Approximate 2mm
Coverage	: Approximate 3-4kg/m ²	Setting time	: Approximate 24-48 hours

Ezi PREMIX MODIFIED RENDER 103



High performance, modified cement-sand rendering mortar. Suitable to use for patching, brick wall, concrete wall, blocks and etc.

高性能改良水泥底灰。适用于修补，砖墙，空心砖墙，混凝土墙壁等等。

PRODUCT INFORMATION

Colour	: Grey	Bed thickness	: 5 to 15mm (1 coat) 15 to 25mm (2 coat) 25 to 35mm (3 coat)
Packing	: 40kg		
Shelf life	: 6 months (Vbag), 12 months (Sbag)		

APPLICATION DATA

Application area	: Wall, Interior/Exterior, Dry/Wet	Drying period	: 1-2 weeks at 12mm bed thickness
Mixing ratio	: 22 pbw. of water for 100 pbw. of powder	Initial setting time	: Approximate 4 hours
Coverage	: Approximate 6m ² per bag at thickness 2mm	Final setting time	: 24-48 hours (depending on atmospheric condition)
Pot life	: Approximate 1.5 hours		

Bed Thickness and Coverage (Approximation)

Bed thickness	5mm	10mm	20mm
Coverage	6.0kg/m ²	12kg/m ²	24kg/m ²

Ezi PREMIX MODIFIED MORTAR 104



High performance, modified cement-sand mortar. Specially developed for screeding or leveling.

高性能改良水泥砂浆。适用于平整地坪基面。

PRODUCT INFORMATION

Colour	: Grey	Bed thickness	: 20-50 mm
Packing	: 40kg	Shelf life	: 6 months (Vbag), 12 months (Sbag)

APPLICATION DATA

Application area	: Floor, Interior/Exterior, Dry/Wet	Drying period	: 2-3 weeks at 50mm of bed thickness
Mixing ratio	: 27 pbw. of water for 100 pbw. of powder	Initial setting time:	Approximate 3.5 hours
Coverage	: Approximate 6m ² per bag at thickness 2mm		
Pot life	: Approximate 2.5 hours		

Bed Thickness and Coverage (Approximation)

Bed thickness	20mm	40mm	50mm
Coverage	38kg/m ²	76kg/m ²	95kg/m ²

Vbag: Valve Bag Sbag: Sewing Bag

5.0

WATERPROOFING

Ezi WP SLURRY C177 (Cementitious Waterproofing System)



Two components, styrene acrylic-based cementitious waterproofing system which specially formulated to provide flexible, durable, seamless waterproofing.

以两组成分制成的本乙丙烯酸的水泥防水系统，具有弹性，坚固耐用及完美结合的防水特质。

PRODUCT INFORMATION			
Colour	: Grey	No. of coat	: Recommended 2 coats (1-2mm thick)
Packing	: Part A (powder) - 15kg (Two components) Part B (liquid) - 6 litres	Shelf life	: 6 months (Vbag) 12 months (Sbag)
APPLICATION DATA			
Application area	: Wall/Floor, Interior/Exterior, Dry/Wet	Pot life	: 3-4 hours
Mixing ratio	: 1st coat: 60-65 pbw. of liquid for 100 pbw. of powder 2nd coat: 35-40 pbw. of liquid for 100 pbw. of powder	Touch dry time	: 3-5 hours (depend on atmospheric condition)
Coverage	: Approximate 6-7 m ² per set	Setting time	: 24-48 hours

Ezi WP B188 (Water-based PU Bituminous)



Single component polymer, water-based PU Bituminous, natural rubber and polyurethane combines with asphalt and emulsified to create elastic waterproof membrane.

以天然橡胶，聚氨酯与沥青结合而成的单组聚合物，具有弹性的防水卷材。

PRODUCT INFORMATION			
Colour	: Dark brown	No. of coat	: Recommended 2 coats (1-2mm thick)
Packing	: 5, 20 kg	Shelf life	: 12 months (dry condition)
APPLICATION DATA			
Application area	: Wall/Floor, Interior/Exterior, Dry/Wet	Touch dry time	: 2-3 hours (depend on atmospheric condition)
Coverage	: Approximate 1.2kg/m ² at 1mm thickness	Setting time	: 24 hours

Vbag: Valve Bag Sbag: Sewing Bag

» Waterproofing Installation Process (Ezi WP SLURRY C177)

Step 1 Preparing the Substrate

- Ensure substrate is dry, sound and free from contamination, e.g. grease oil, dust, loose particle, laitance, etc.

Step 3 Applying the mix

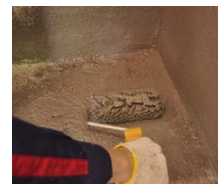
- Apply Ezi WP SLURRY C177 consistently onto the substrate using stiff brush, large format brush/roller.
- Treat all the joints and corners first before apply extended throughout the entire areas.
- Apply first coat throughout the selected area and allow it to cure until touch-dry condition before second coat commence.



Step 2 Preparing the Mix

- Mix Ezi WP SLURRY C177 part A and part B. until a consistent slurry is achieved. (in accordance with recommended mixture ratio)

- Before first coat is fully cured, apply second coat over the first coat at opposite direction to provide a stronger mechanism waterproofing layer.
- Allow the applied waterproofing layer to cure for at least 24-48 hours.
- The ideal thickness for cured layer (2 coats) is approximately 1-2mm.



6.0

SEALER AND IMPREGNATOR

Ezi SEALER SUPER GLOSS/MATT



Ready to use, acrylic resin type, solvent based sealer for protecting surfaces and enhancing appearance of natural stones, cementitious substrates and etc.

即可使用的丙烯酸系树脂溶剂，具有保护表层与美化外观的功能。适用于天然石材，水泥基材等等。

PRODUCT INFORMATION

Colour : Gloss or Matt **Shelf life** : 12 months
Packing : 1, 5, 20 litres (dry condition)

APPLICATION DATA

Coverage for cementitious substrates

Single coat : Approximate 3.3-5 m²/litre
Second coat : Approximate 10m²/litre
Touch dry time : Approximate 2-4 hours
Curing time : 24 hours

Ezi H2O SEAL



Water repellent, ready to use, silicon type, solvent based impregnator for protecting top surface of cementitious substrate, natural stones, selected ceramic tiles, terracotta and etc.

防水，即可使用的硅酮性溶剂，具有保护表层的功能。适用于天然石材，水泥基材等等。

PRODUCT INFORMATION

Colour : Transparent **Shelf life** : 12 months
Packing : 1, 5, 20 litres (dry condition)

APPLICATION DATA

Coverage for cementitious substrates

Single coat : Approximate 2.5-3.3m²/litre
Second coat : Approximate 5-10m²/litre
Touch dry time : Approximate 2-4 hours
Curing time : 24 hours

Ezi WR18 SEAL



Water repellent, transparent thin liquid, ready to use, silicone type, solvent based impregnator for protective treatment of underside and 4 edges of natural stone etc.

防水，即可使用的硅酮性溶剂，用于保护天然石材及，等等的下侧及4个边缘。

PRODUCT INFORMATION

Colour : Transparent **Shelf life** : 12 months
Packing : 1, 5, 20 litres (dry condition)

APPLICATION DATA

Coverage for marble or granite (underside and 4 sides)

Approximate 15-20m²/litre (1 coat)
Touch dry time : Approximate 2-4 hours
Curing time : 24 hours

Ezi PREMIUM 1 SEAL



Oil and water repellent, transparent thin liquid, ready to use, water-based impregnator for protective treatment of top surface of natural stones, selected ceramic tiles, clay tiles and etc.

防油和防水，水性溶液。用于保护天然石材，瓷砖等等的表层。

PRODUCT INFORMATION

Colour : Transparent **Shelf life** : 12 months
Packing : 1, 5, 20 litres (dry condition)

APPLICATION DATA

Coverage for marble or granite (surface)

Approximate 20-25m²/litre (1 coat)
Touch dry time : Approximate 2-4 hours
Curing time : 24 hours

Others

Ezi CTFix



Good performance and water resistant normal cementitious adhesive for installing ceramic tiles.

抗水水泥胶粘剂，适用于粘贴瓷砖。

PRODUCT INFORMATION

Colour	: Grey	Shelf life	: 6 months (Vbag) 12 months (Sbag)
Packing	: 25kg		
Classification	: C1	Classification	: 3-6mm

APPLICATION DATA

Application area	: Wall/Floor, Interior/Exterior, Dry/Wet
Mixing ratio	: 25-27pbw. of water for 100pbw. of powder
Coverage	: Approximate 3kg/m ² at 3mm bed thickness
Pot life	: Approximate 3-4 hours
Open time	: Approximate 15-20 minutes
Setting time	: Approximate 23-48 hours

Ezi WHITE CEMENT FILLER



Cement-based white filler. Suitable for grouting narrow tile joint up to 3mm wide.

水泥基白色填料，适用于缝宽达3毫米。

PRODUCT INFORMATION

Colour	: Off-white	Shelf life	: 6 months (Vbag) 12 months (Sbag)
Packing	: 25kg		

APPLICATION DATA

Application area	: Wall/floor, interior/exterior, dry/wet
Mixing ratio	: 38-40 pbw. of water for 100 pbw. of powder
Setting time	: 24 to 48 hours

Ezi CERAMIC TILE CLEANER



Ready to use, acid-based cleaning agent for removing cement, adhesive, grout residues and common dirt at wall and floor ceramic tiles, sanitary wares and etc.

即可使用酸性除污清洗剂。用于清除在墙与地面砖多余的水泥粘贴剂，水泥填缝剂，及卫生器具的污渍。

PRODUCT INFORMATION

Colour	: Light yellowish liquid	pH value	: 1.00 to 1.50
Packing	: 1 Ltrs, 4 Ltrs, 25 Ltrs	Shelf life	: 12 months (in dry condition)

APPLICATION DATA

Application area	: Not recommended for metal, highly polished surfaces, marbles, porcelain tiles or certain decorative tiles.		
Mixing ratio	Light duty	: 6 pbw. of water to 1 pbw. of Ezi CERAMIC TILE CLEANER	
	Medium duty	: 3 pbw. of water to 1 pbw. of Ezi CERAMIC TILE CLEANER	
	Heavy duty	: 1 pbw. of water to 1 pbw. of Ezi CERAMIC TILE CLEANER	
Coverage	: Approximate 8m ² /litre		

Vbag: Valve Bag Sbag: Sewing Bag

A Member of



FMM since 2016

Ezi MOTARTECH SDN. BHD. (874800-D)

Office:

Penang

A 80, Jalan Masjid Negeri,
11600, Penang, Malaysia
T 04-658 8817
F 04-658 8818

Kuala Lumpur

A No.2, Jalan Tembaga SD5/2H,
Bandar Baru Sri Damansara,
52200, Kuala Lumpur
T 03-6277 3709
F 03-6277 3760

Hong Kong

A Room 208, 2/F, David House,
8-20 Nanking st Jordan,
Kowloon Hong Kong
T 852-2385-0222
F 852-2385-1088
E decortech@ezi-fix.com

Warehouse/factory:

Penang

A 1888, Jalan Lahar Bubu,
Kepala Batas, 13200, Pulau Pinang
T 04-575 7221
F 04-575 7221

Perak

A PT990, 2 ½ KM
Off Jln Simpang Pulau-Lahat,
31300 Kampung Kepayang,
Perak Darul Ridzuan
T 05-357 5818
F 05-357 5818



The product images shown are for illustration purposes only and may not be an exact representation of the product.
Ezi MOTARTECH reserves the right to change product images and specifications at any time without notice.